

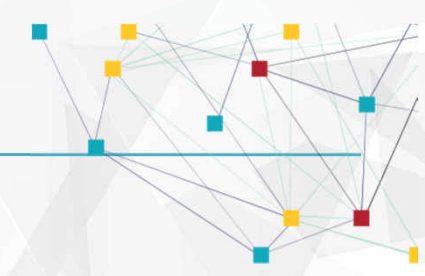
Leveraging networks to  
take action to address the  
complexity of child, youth  
and family health

---

Symposium on Child and Youth Mental Health  
August 22, 2017

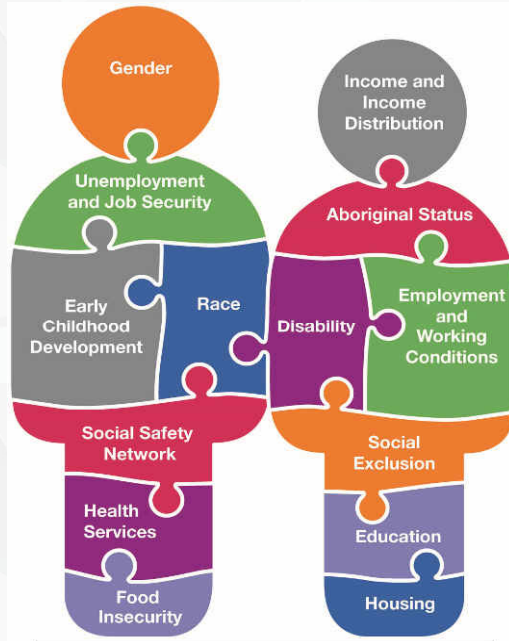
*Maureen McDonald, Health Nexus*



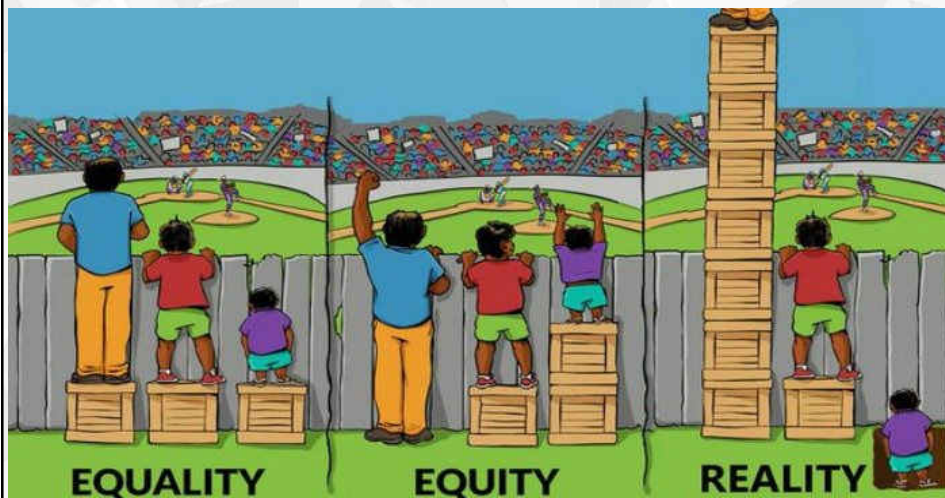
- 
- ✓ 30 years of experience developing cross-sectoral networks
  - ✓ We actively weave and broker networks
  - ✓ We encourage, support and model the development of a 'network/system mindset'

Our work, **health promotion**, is about **developing strategies to address the factors that impact health but which lie outside the traditional health system.**

These factors are sometimes called the **social determinants of health.**



Together, we can develop strategies to address the conditions and environments that affect child and youth mental health



### EQUALITY VERSUS EQUITY

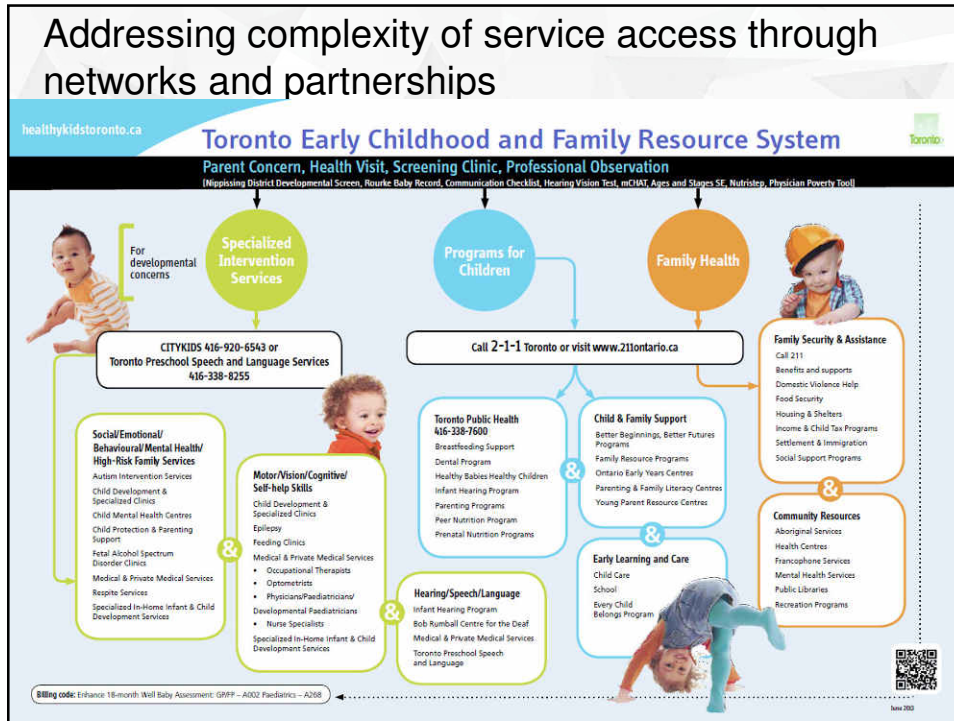
In the first image, it is assumed that everyone will benefit from the same supports. They are being treated equally.

In the second image, individuals are given different supports to make it possible for them to have equal access to the game. They are being treated equitably.

In the third image, all three can see the game without any supports or accommodations because the cause of the inequity was addressed. The systemic barrier has been removed.

### Networks lead to collaboration

The collage illustrates the concept of networks leading to collaboration. It features a group of diverse students, social media icons (g+, LinkedIn, Twitter), a network diagram, a group of children smiling, a word cloud with 'COLLABORATION' as the central word, a globe, and a group of people sitting around a table.



## Addressing the underlying social conditions that lead to poor health

While treating patients' immediate needs, **family doctors are encouraged to ask their patients...**

**Child Poverty**  
A practical tool for primary care

Family Assessment for Child Health

What can we do as physicians to address this potentially modifiable risk factor and reduce disparities?

ASK

1. Do you have trouble making ends meet?
2. Do you have trouble feeding your family?
3. Do you have trouble paying for medications?
4. Do you receive the child tax benefit?
5. Do you have legal or immigration challenges?
6. Do you have a safe and clean place to live?

- Do you have trouble making ends meet?
- Do you have trouble feeding your family?
- Do you have trouble paying for medications?
- Do you receive the child tax benefit?
- Do you have legal or immigration challenges?
- Do you have a safe and clean place to live?

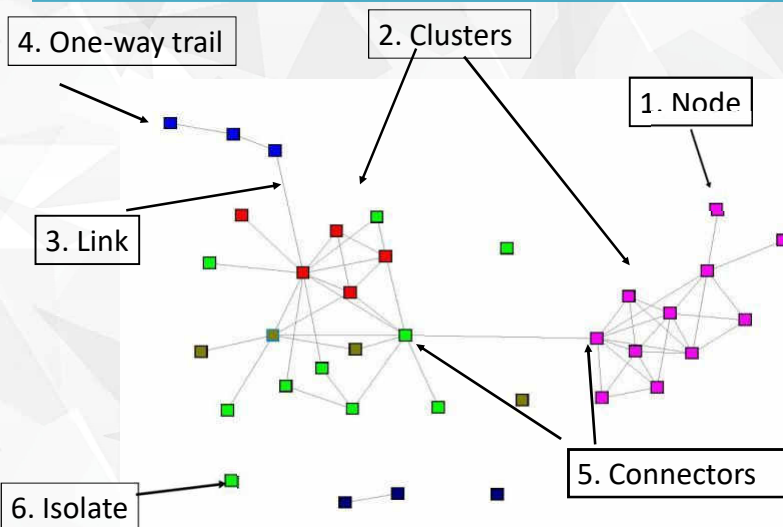
Dr. Gary Bloch: Physicians poverty tool  
<http://ocfp.on.ca/cpd/povertytool>

A network map is an excellent tool for visually tracking your ties and designing strategies to create new connections.

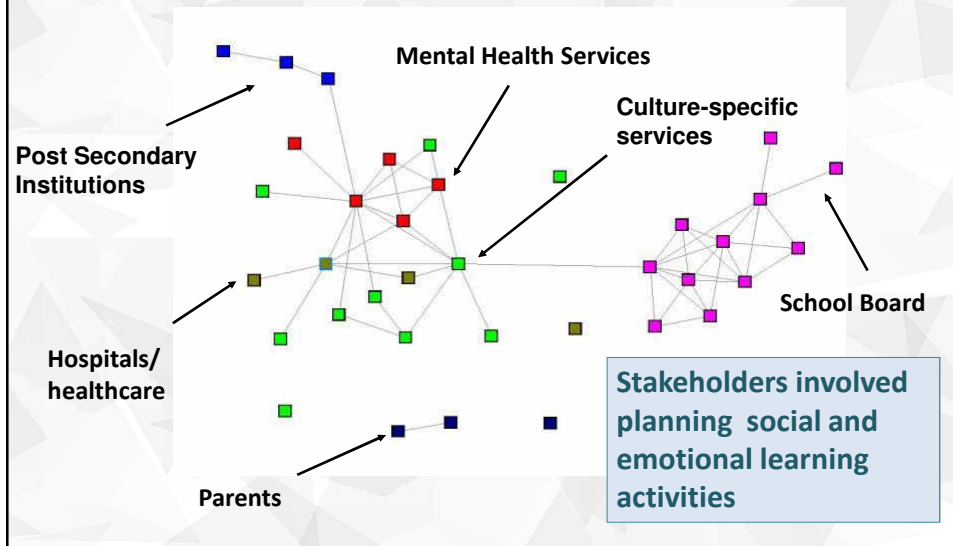
What story are you not able to tell about the work you do?



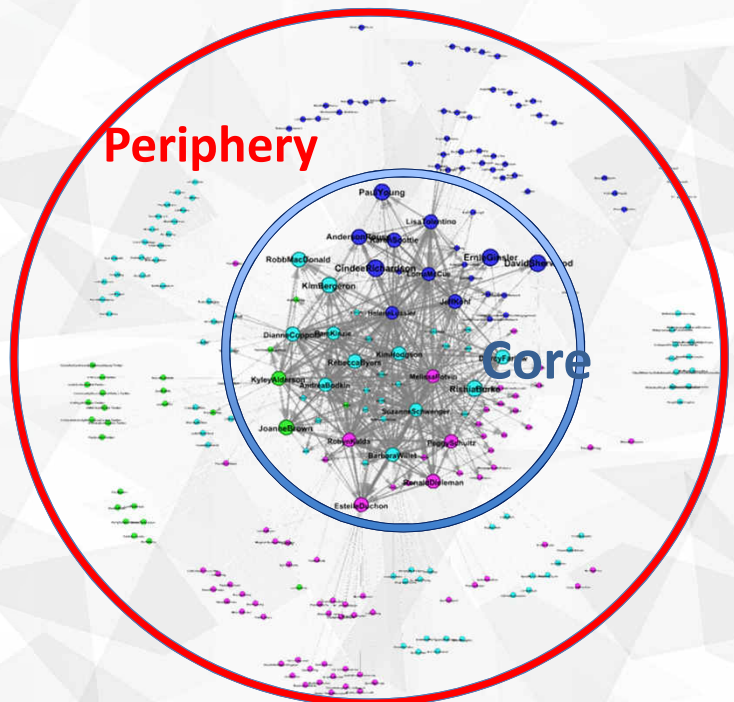
## Network Mapping:



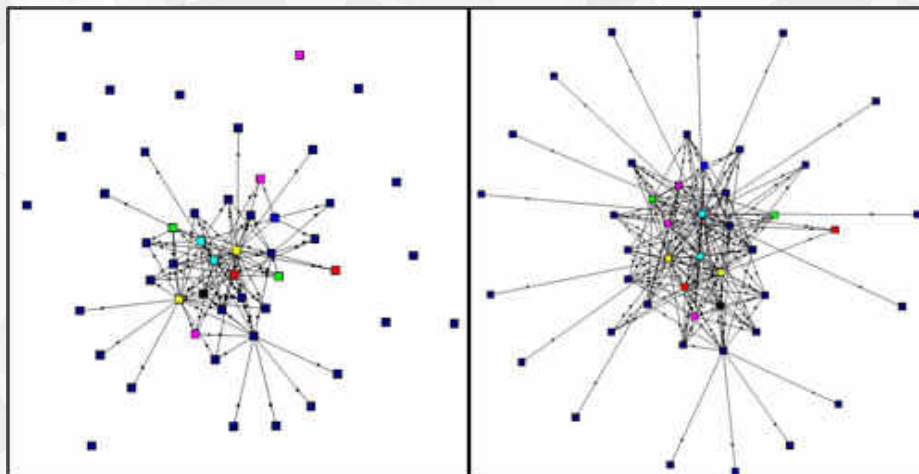
## Making the abstract visible



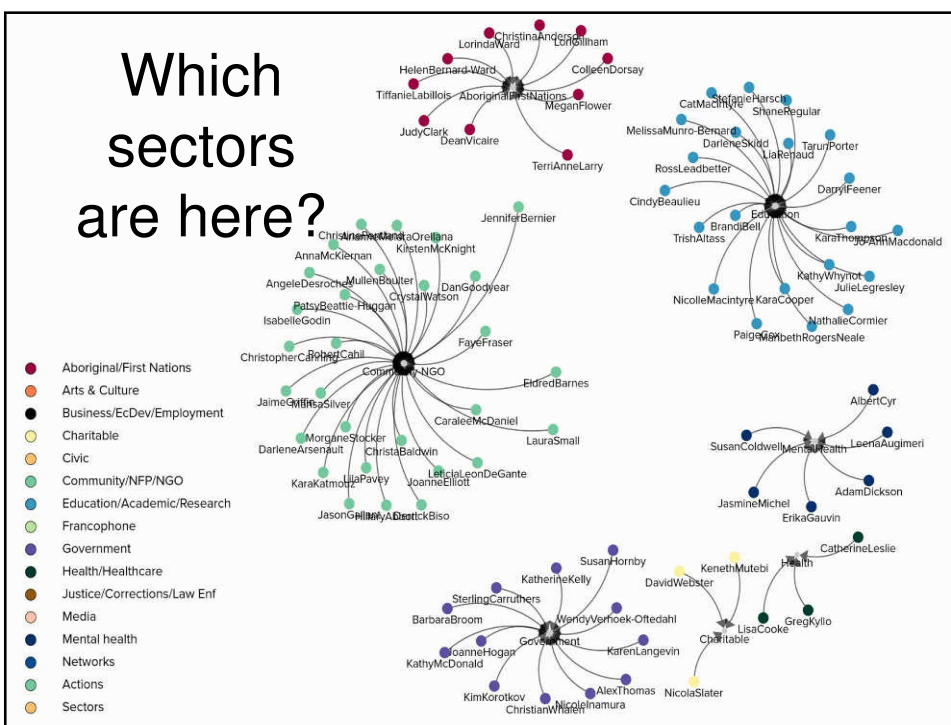
New ideas and approaches  
come from the periphery

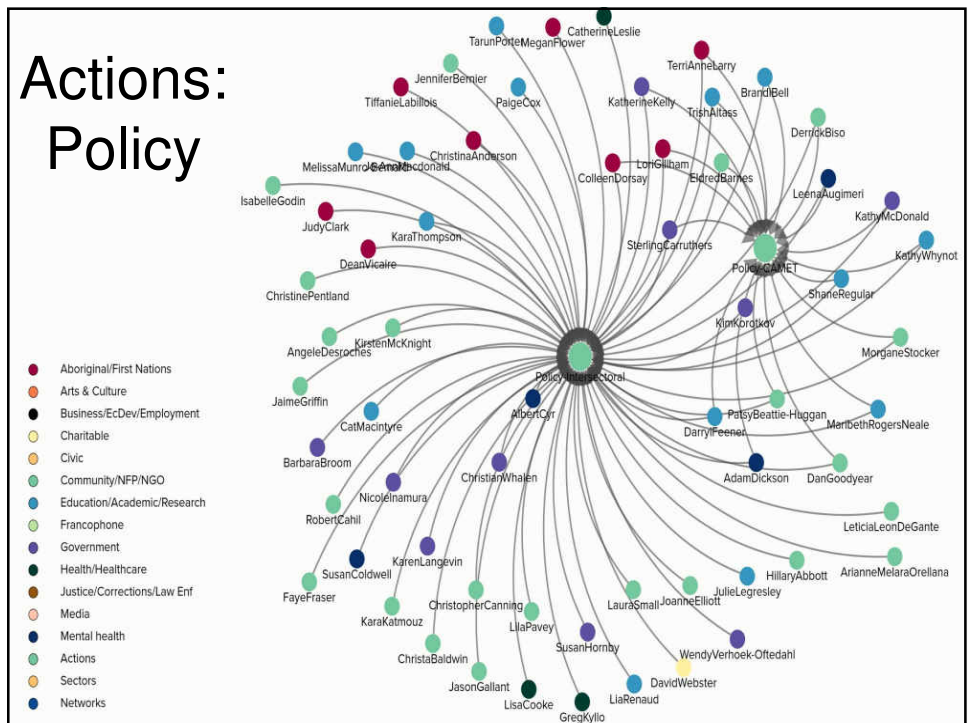
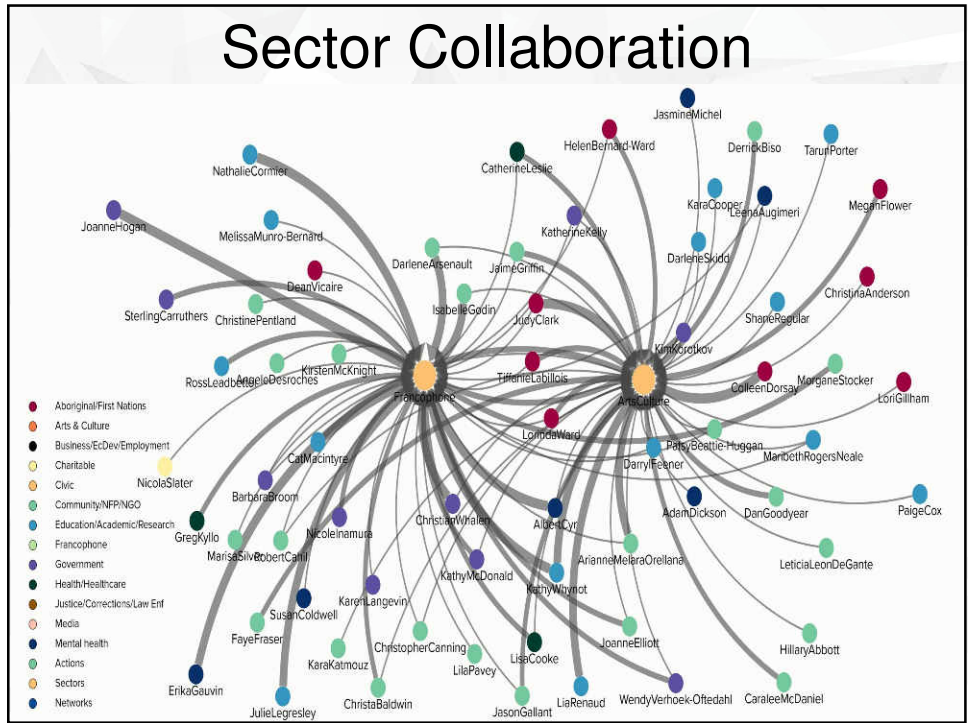


# Networks deepen over time

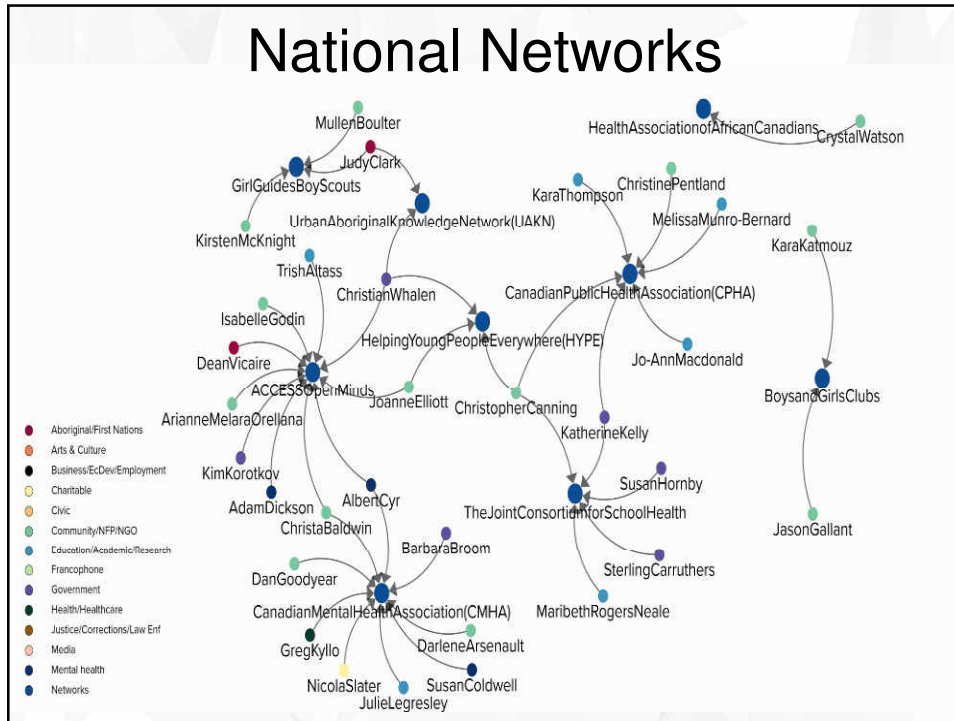


## Which sectors are here?





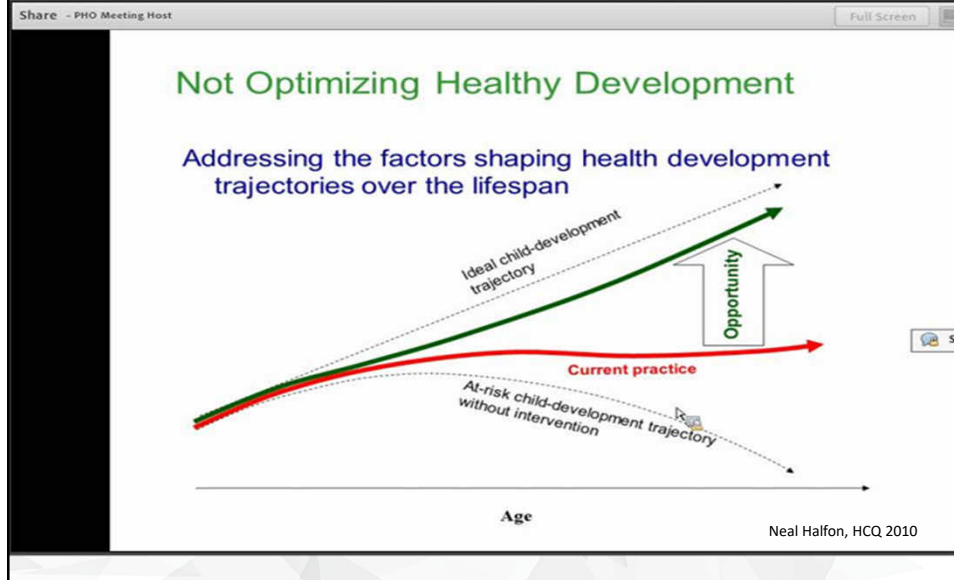




## The challenge

- To effectively partner with other organizations, agencies, and groups
  - maximize resource sharing
  - amplify reach & outcomes
- To move beyond our current beliefs, practices and assumptions to uncover our common vision and develop shared actions
- To build, maintain and nurture trust

## Risk of not collaborating to address child and youth mental health

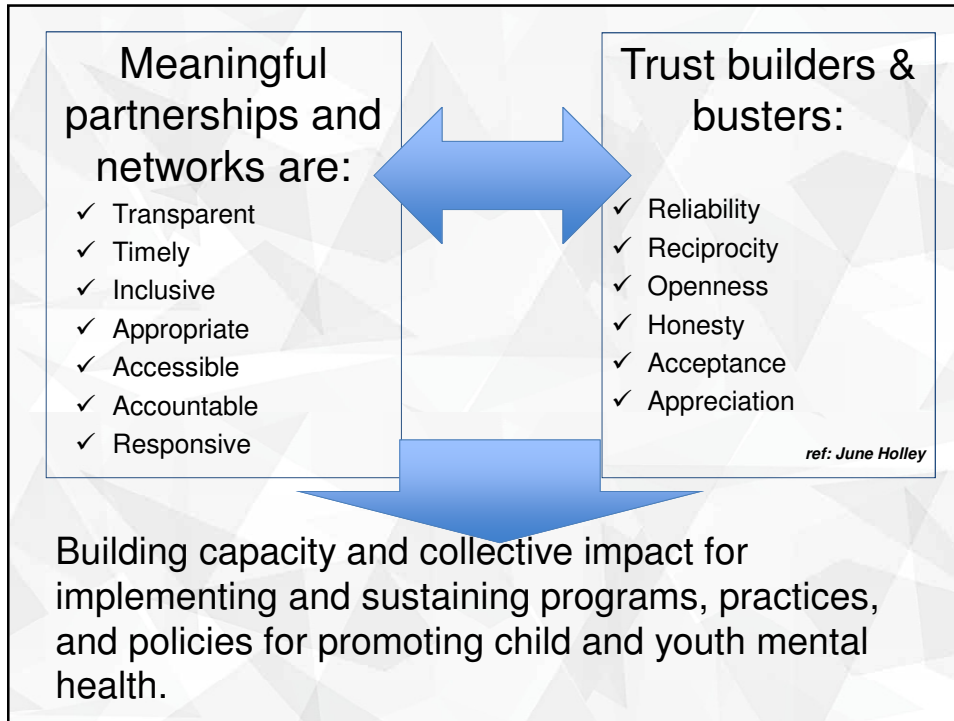


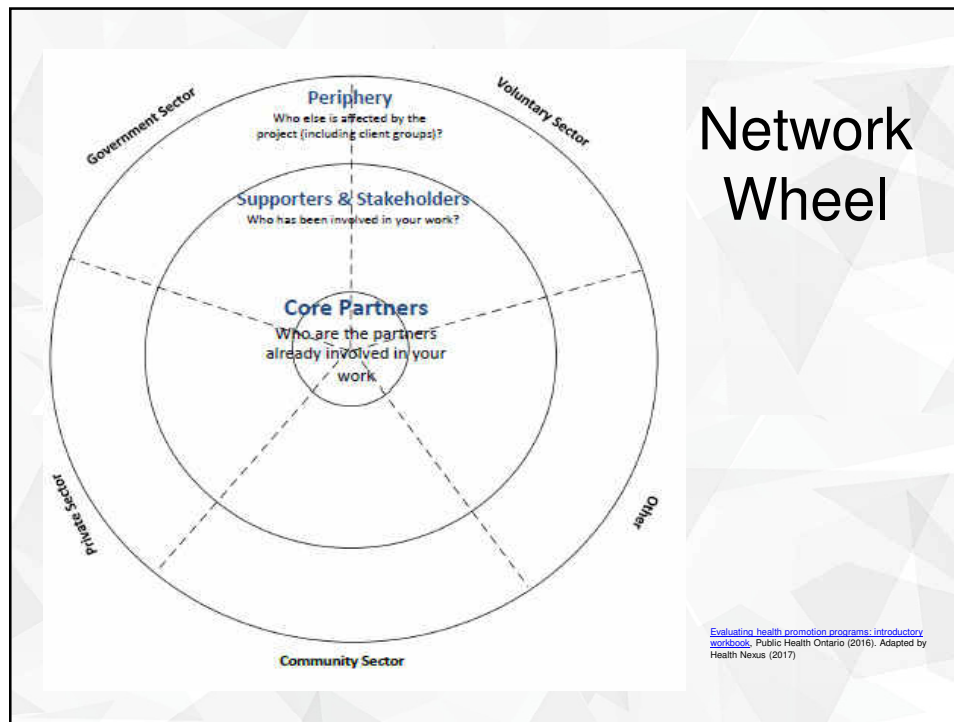
## Six Activities of Successful Partnerships



**This is not a linear process – practice them often in a variety of ways.**

**Tending to each of the key activities will support success in your partnerships.**





## Network Wheel

### Connect to:

#### Examine the network maps

1. Who are the partners already involved in your networks?
2. Who is missing from your network?
3. Who in your network do you share common interests in taking action on child and youth mental health?

<https://kumu.io/robynk/asi-2017>

## References, Tools and Resources

---

- Bertrand, J., Williams, R., & Ford-Jones, L. (2008, December). <http://www.ncbi.nlm.nih.gov/pmc/articles/PMC2603506/pdf/pch13857.pdf>
- Best Start Resource Centre. (2011). *Best start on the track guide*. [http://www.beststart.org/OnTrack\\_English/pdf/OnTrack\\_PDF.pdf](http://www.beststart.org/OnTrack_English/pdf/OnTrack_PDF.pdf)
- Bethell, C., Reuland, C., Schor, E., Abrahms, M., & Halfon, N. (2011). Rates of parent-centred developmental screening: Disparities and links to services access. <http://pediatrics.aappublications.org/content/128/1/146.full.pdf>
- Caring for Kids New to Canada. Retrieved from [www.kidsnewtoCanada.ca](http://www.kidsnewtoCanada.ca)
- [Evaluating health promotion programs: introductory workbook](#), Public Health Ontario (2016). Adapted by Health Nexus (2017)
- Bloch, G et all, (2014) Physicians Poverty Tool - <http://ocfp.on.ca/cpd/povertytool>
- Halton Early Years Mental Health Committee. (2014, May 15). *Social-emotional development in the early years: A common message paper*. Region of Halton. [www.ourkidsnetwork.ca/.../97\\_WTG\\_PolicePractice\\_Social-Emotional-Dev%2012.05...](http://www.ourkidsnetwork.ca/.../97_WTG_PolicePractice_Social-Emotional-Dev%2012.05...)
- HC Link (2017) What successful partnerships do. [http://www.hclinkontario.ca/images/2017/HCLink\\_6Activities\\_PartnershipDevelopment.pdf](http://www.hclinkontario.ca/images/2017/HCLink_6Activities_PartnershipDevelopment.pdf)
- Holley, June ~ Network Weaver Handbook (2012) <http://www.networkweaver.com/>
- Liberating Structures <http://www.liberatingstructures.com/ls-menu/>
- Kumo Network Mapping; ASI on Healthy and Safe Communities 2017 - <https://kumu.io/robynk/asi-2017>
- McCain, M.N., Mustard, F., & Shanker, S. (March, 2011). *Early years study 2: Putting science into action*. [http://www.oise.utoronto.ca/humandevlopment/UserFiles/File/early\\_years\\_study\\_2.pdf](http://www.oise.utoronto.ca/humandevlopment/UserFiles/File/early_years_study_2.pdf)
- Polanyl, M., Johnson, L., Khanna, A., Dirie, S., & Kerr, M. (2014, November). *The hidden epidemic: A report on child and family poverty in Toronto*. <http://www.torontocas.ca/app/Uploads/documents/cast-report2014-final-web71.pdf>
- Public Health Agency of Canada. (n.d.). *What is the population health approach?* <http://www.phac-aspc.gc.ca/ph-sp/approach-approche/appreng.php>
- Toronto Early Childhood and Family Resource System: Pathway and Resource Listing, (2012) [www.healthykidstoronto.ca](http://www.healthykidstoronto.ca)

## Thank you

---

Maureen McDonald  
Health Nexus  
[www.healthnexus.ca](http://www.healthnexus.ca)  
[www.nexussante.ca](http://www.nexussante.ca)

